



Wine Club
JANUARY 2010



Want to Customize Your Membership?

AS WE ENTER 2010, we are pleased to announce the addition of our new Custom Club. This club allows members to select the wines that will make up a case for them every April and October. Members will receive a list of wines to choose from in March and September, giving them 30 days to select their wines. Want all red? No problem. Want to mix and match? You got it. It's your case just the way you like it. Our other clubs are staying the same so simply contact Erin if you wish to change your membership to the Custom Club. Cheers!

White Wine of the Month

2008 CHARDONNAY - WILDWOOD VINEYARD

APPELLATION..... Sonoma Valley
VINE AGE..... 8-24 years
AVERAGE YIELD..... 2 tons per acre
CASES PRODUCED..... 184

HARVEST DATE
August 30 through September 10 at an average Brix of 25.3°

WINEMAKER'S COMMENTS
The 2008 Kunde Wildwood Chardonnay is like having scrumptious yeast-risen Danish filled with apples and pears—but this baby isn't for breakfast! The aroma is like yeasty bread dough with some slices of Asian pear thrown in. Even better, the flavors of nutmeg, allspice, and baked apples just glide over your tongue with a rich, velvety smoothness that will please your mouth. Good companions for this wine are spinach quiche or rich chicken pot pie. All of this talk is making our tummies rumble. Time to pour a glass and start cooking!

TIM BELL, WINEMAKER



SUGGESTED RETAIL..... \$26.00
CLUB PRICE..... \$20.80
CASE PRICE (12 bottles) \$218.40

Sale Wine!

2005 MERLOT

SUGGESTED RETAIL..... \$216/case
SUPER SALE PRICE..... \$72/case

2005 DUNFILLAN CUVÉE

SUGGESTED RETAIL..... \$480/case
SUPER SALE PRICE..... \$120/case

2005 BOB'S RED

SUGGESTED RETAIL..... \$180/case
SALE PRICE..... \$90/case

Full case purchases only - No mix and match - Cannot be combined with any other offer - \$1 shipping not applicable

Winter at Kunde Family Estate



Red Wine of the Month

2007 CABERNET SAUVIGNON

APPELLATION..... Sonoma Valley
VINE AGE..... 4-16 years
AVERAGE YIELD..... 3.2 tons per acre
CASES PRODUCED..... 18,690

HARVEST DATE
September 18 through October 11 at an average Brix of 25.4°

WINEMAKER'S COMMENTS
More than any other grape variety, Cabernet Sauvignon at Kunde Family Estate seems to produce a distinctive flavor profile year after year. Our 2007 vintage of Cabernet maintains that tradition. From the opening aromas of raspberries and rosemary, you'll know this wine couldn't be from any place but Kunde. The flavors of cherries and cocoa powder reflect the distinctive red soil of our estate. Pasta with a Tuscan-style meat sauce or beef tenderloin prepared with a paprika-infused wine sauce will bring out the fruit flavors of this velvety wine. Kunde Cab's distinction sounds delicious!

TIM BELL, WINEMAKER



SUGGESTED RETAIL..... \$23.00
CLUB PRICE..... \$18.40
CASE PRICE (12 bottles) \$193.20

Movie Nights at Kunde Family Estate

\$20/PERSON INCLUDES A GLASS OF WINE AND TICKET TO THE MOVIE IN OUR AGING CAVES. RESERVATIONS ARE REQUIRED AND SPACE IS LIMITED. SIGN UP TODAY AT EVENTS@KUNDE.COM OR 707-833-5501.

FRIDAY, JANUARY 22



"Julie & Julia"

starring
Meryl Streep
and
Amy Adams

rated PG-13

Julia Child and Julie Powell - both of whom wrote memoirs - find their lives intertwined. Though separated by time and space, both women are at loose ends... until they discover that with the right combination of passion, fearlessness and butter, anything is possible.

FRIDAY, FEBRUARY 19



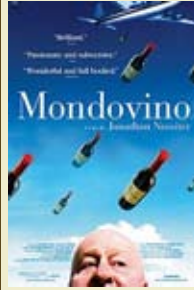
"French Kiss"

starring
Meg Ryan
and
Kevin Kline

rated PG-13

When Kate's fiance calls her from Paris to call off their wedding, she boards a plane to get him back. Sitting next to petty French thief Luc Teysier, he hides a stolen necklace in her bag. Her bag is stolen and Kate and Luc head to Cannes -- Luc to find the necklace and Kate to get Charlie back. Along the way, Kate and Luc begin having feelings for each other.

FRIDAY, MARCH 12



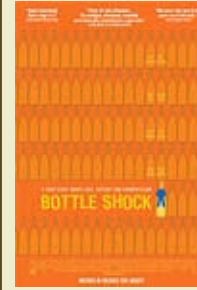
"Mondovino"

documentary

rated PG-13

This film explores the impact of globalization on the various wine-producing regions, and the influence of critics like Robert Parker and consultants like Michel Rolland in defining an international style. It pits the ambitions of large, multinational wine producers, in particular Robert Mondavi, against the small, single estate wineries who have traditionally boasted wines with individual character driven by their terroir.

FRIDAY, APRIL 16



"Bottle Shock"

starring
Alan Rickman
and
Bill Pullman

rated PG-13

In 1976, Steven Spurrier, a sommelier in Paris, comes to the Napa Valley to take the best he can find to Paris for a blind taste test against French wine. He meets Jim Barrett, whose Chateau Montelena is mortgaged to the hilt as Jim perfects his chardonnay. As Spurrier organizes the "Judgment of Paris," Jim doesn't want to participate while his son Bo knows it's their only chance. Part of this movie was filmed here at Kunde Family Estate.

2010 Hike Schedule

HIKE AND TASTE WITH BILL MYERS

JANUARY 9
FEBRUARY 6
APRIL 3
JUNE 19
AUGUST 7
NOVEMBER 6
DECEMBER 11

\$25/person includes wine tasting. A portion of the hike fee will be donated to the Sonoma Ecology Center.

ECO-TOUR DOG HIKE WITH JEFF KUNDE

MARCH 27
MAY 15
OCTOBER 9

4TH OF JULY DOGGIE CELEBRATION WITH JEFF KUNDE

JULY 3

\$45/person includes wine tasting and lunch. A portion of the hike fee will be donated to Canine Companions and the Sonoma County Humane Society.

HARVEST ECO-HIKE WITH JEFF KUNDE

SEPTEMBER 18

\$60/person includes wine tasting and lunch. A portion of the hike fee will be donated to the Sonoma Ecology Center.

Save the Date

FEBRUARY 13 & FEBRUARY 14
Valentine's Day at Kunde Family Estate

MARCH 13
New Release Pick-Up Party

MARCH 20 & MARCH 21
Savor Sonoma Valley

MAY 1
Winemaker's Dinner in the Caves
with Tim Bell

SATURDAY, MAY 29
Tunes on the Terrace

SATURDAY, JUNE 26
Lobster Feed

THURSDAY, JULY 8
New Release Pick-Up Party

SATURDAY, AUGUST 14
Blending Seminar in the Aging Caves

SATURDAY, SEPTEMBER 11
New Release Harvest Pick-Up Party

OCTOBER 30
HalloWinemaker's Dinner in the Haunted
Aging Caves with Tim Bell

NOVEMBER 26 & NOVEMBER 27
Holiday Open House

DECEMBER 4
New Release Pick-Up Party

to RSVP for club events, contact Erin, 707-282-1532 or erin@kunde.com

to RSVP for the hikes, contact Stephanie, 707-282-1534 or stephanie@kunde.com

